



How to use CX Systems Multimedia Terminals Rev. 1.3

Copyright 2006. CX Systems Multimedia. All rights Reserved

Thank you very much for registering at CX Systems Multimedia Gaming & Internet Networks!

As a member you will enjoy the benefits of one of the fastest computers in the country; newest games, multimedia, and research applications that hit the shelves; and currently the fastest internet in Philippine Cybercafé Industry. To make things more exciting, you are automatically entitled for a chance to win on any promos that CX Systems Multimedia Gaming & Internet Networks has to offer!

Because we value the money you use to access our services, your account will be activated and will be protected by your personal username and password. This will ensure that all the money you paid will be used for your own purposes only.

With CX Systems Prepaid MAX™ Technology, a pioneering and patented cybercafé management and application launching protocol, you will have an exclusive feel on any terminal you use. This is made possible because all your favorite games and applications will be accessible in a flash and all your personal saved games and documents can be accessed regardless of what computer terminal you want to use. We definitely value your privacy and ease of use!

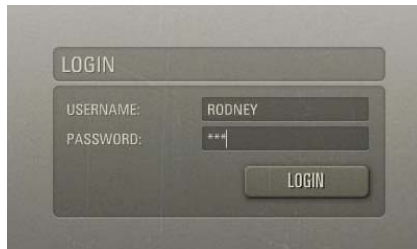
This booklet will help you familiarize the use of CX Systems Multimedia computer terminals.

Please keep this for your future reference.

Username: _____

Password: _____

LOGIN



Enter the Login Name you have chosen in your registration form.

Then enter your password and click the LOGIN button to start your time and to access programs and games. *You must have available credits before logging in.*

Note: If it is your first time to login, it is unnecessary to enter any password. Just leave it blank and press LOGIN.

PERSONAL DETAILS (for first time log-in customers only)



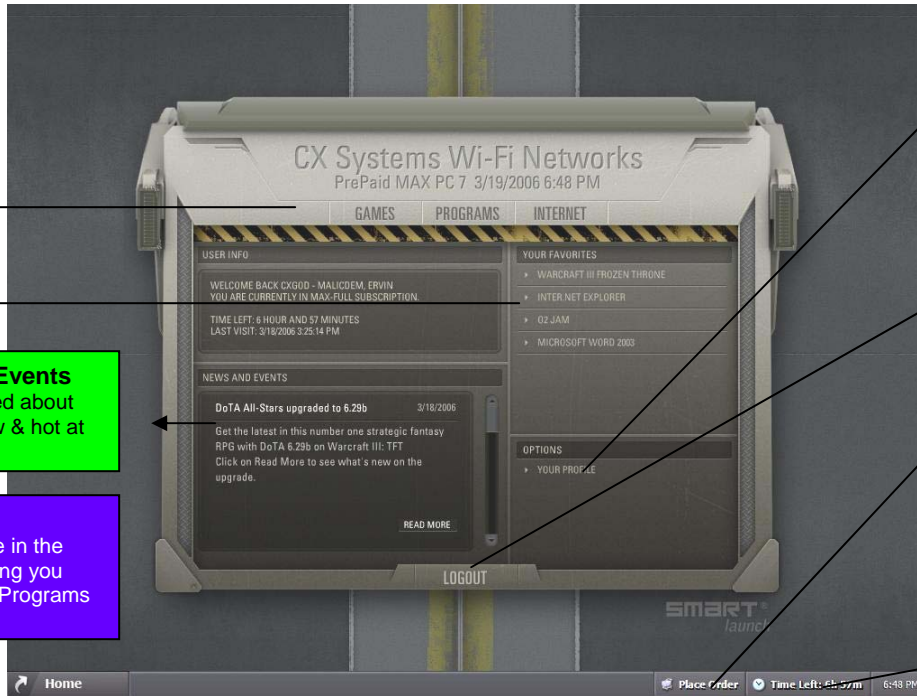
If it is your first time to login, enter the password you want to use (6 to 10 alphanumeric characters only.)

Fill up the required fields properly.

Click CONTINUE.

Note: The information you place here is for demographic use only. CX Systems will not sell nor give this information to the public.

THE MAIN MENU



News & Events
Be informed about what's new & hot at CXS.

HOME
Wherever you are in the menu, this will bring you back to the Main Programs Selection screen

Profile Link
Clicking will direct you to the profile page in case you need to update it.

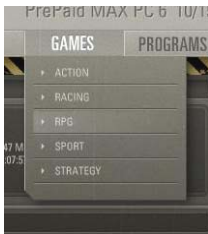
LOGOUT
If you are using PrePaid MAX™, this button will log you out and save your remaining time for later use.

PLACE ORDER
This button will notify the attendant on your additional purchases. (Time, Printing, game cards, CD burning, Prepaid PINs, etc).

Remaining Time Info Area

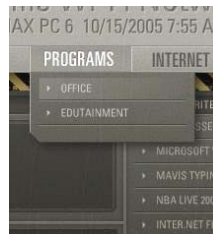
Games and Programs Selection Buttons

These buttons will take you to available games, office, research, multimedia, chat, and internet programs you may need to use.



Clicking the **GAMES** button will show different game genre available.

Click the genre and will show games available for that genre.



Clicking the **PROGRAMS** button will show 2 categories for available programs.

OFFICE for word processing & multimedia authoring.
EDUTAINMENT for research.



Launching Games or programs

After clicking the desired game or program category, list of applications will show up.

Click on the desired program and press **START PROGRAM**. Please wait until the program launches completely.

Note: Games, Programs, and Internet applications availability depends on the access rate you have subscribed for the time.

Access Rates Available: **Regular** (Basic Internet Surfing and Email and Gaming), **Advanced** (27x Faster Internet, Surfing, Email, Digital Encyclopedia Research, Gaming and Downloads), and **Full Access** (multimedia authoring applications, conferencing, and all capabilities of Regular and Advanced Access). **PrePaidMAX™ Regular, Advanced, and Full.**

Favorites Area

This area provides a fast access on all the programs and games you frequently use. Just click on your desired programs to launch them.

Note: If you need to access a game or program not listed on your Favorites, you may click on the Games and Programs Selection Buttons to see a detailed list of available programs for your subscribed access rate.